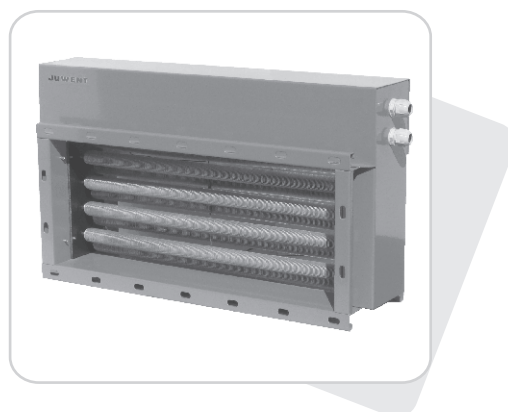


NE



INTENDED USE

Frame heaters are used for air heating in ventilation and air-conditioning installations.

UNIT DESCRIPTION

Series of types of the heaters includes 8 sizes with intake surface from 0,096m² to 0,36m².

The heaters consist of:

- inner frame with collars fitted for connection with ventilation channels
- heating elements with rolled aluminium ribbing with external diameter of an element D=28mm and ribs spacing s=2,8mm
- RD-2 thermostat protecting against exceeding of heater max. temperature

In heaters a=400mm long 0,5kW and 1,0 kW heating elements are used and in heaters a=600mm only elements with 1,0kW are used.

WORKING CONDITIONS

All sizes of the heaters have the possibility of 3-range thermal power regulation, i.e. 1/3, 2/3 and total power.

Minimal speed of air intake upon the heater may not be lower than 2m/s.

DESIGNATIONS

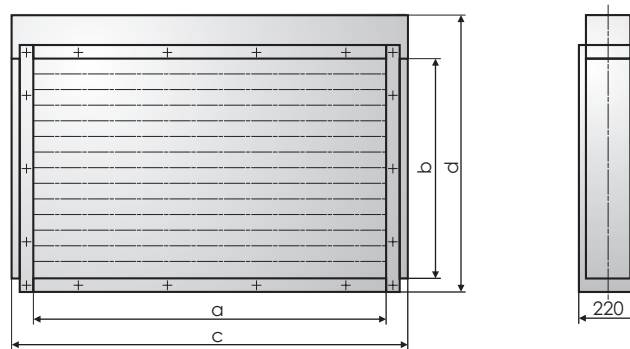
Electric frame heater

NE - 3 - 400 - 13,5

Size	1 ÷ 8
Length of heating elements	400 for sizes 1, 3, 5, 7; 600 for sizes 2, 4, 6, 8
Max power of heating elements	3 ÷ 45 kW

TECHNICAL DATA

Basic dimensions



Size	a [mm]	b [mm]	c [mm]	d [mm]	Weight [kg]
1	400	240	520	440	10
2	600	240	720	440	13
3	400	360	520	560	14
4	600	360	720	560	19
5	400	480	520	680	19
6	600	480	720	680	26
7	400	600	520	800	22
8	600	600	720	800	32

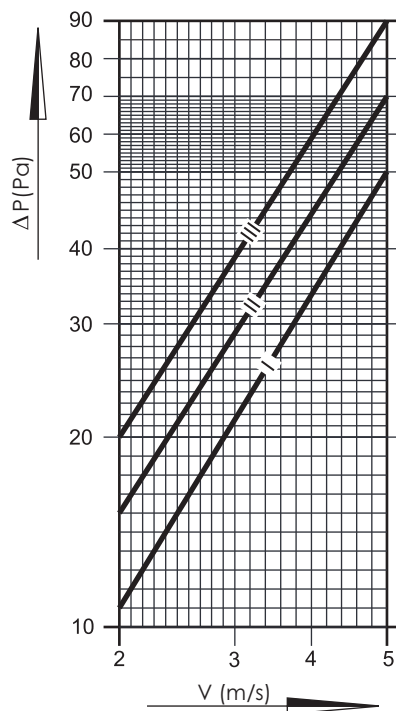
Thermal power of heaters

b [mm]	a [mm]																	
	400									600								
	Number of rows																	
	I		II		III		I		II		III		I		II		III	
kW	A	kW	A	kW	A	kW	A	kW	A	kW	A	kW	A	kW	A	kW	A	
240	3	4,5	6	9	9	13,6	6	9	12	18,1	18	27,2	6	9	12	18,1	18	27,2
360	3	4,5	9	13,6	12	18,1	9	13,6	18	27,2	27	36,3	9	13,6	18	27,2	27	40,9
480	6	9	12	18,1	18	27,2	12	18,1	24	36,3	36	54,5	12	18,1	24	36,3	36	54,5
600	4,5	6,8	15	22,7	18	27,2	15	22,7	30	45,4	45	68,1	15	22,7	30	45,4	45	68,1

The heaters have safety certificate issued by PCBC in Warsaw

The heaters are fitted for 230 V or 400 V voltage.

Resistance of air flow through heaters in the function of air inflow speed



ADDITIONAL DATA

The heaters may be additionally equipped with control system allowing for programming of the heater operation.

The system includes:

- Control clock used for programming of the heater operation period
- temperature governor controlling and regulating temperature in a room

Upon prior agreement with the manufacturer special type of heaters meeting the needs of a customer is possible to perform.